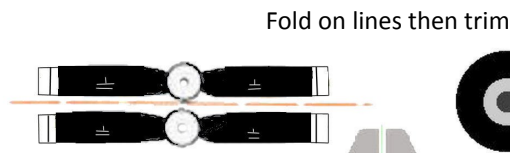


Fits over wing



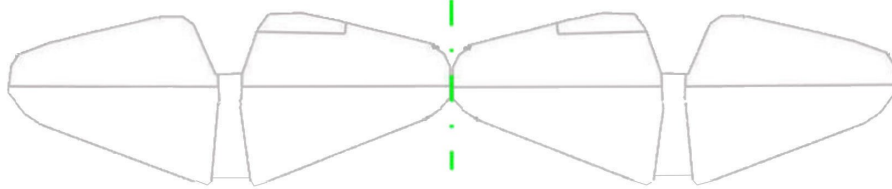
Fold on lines then trim



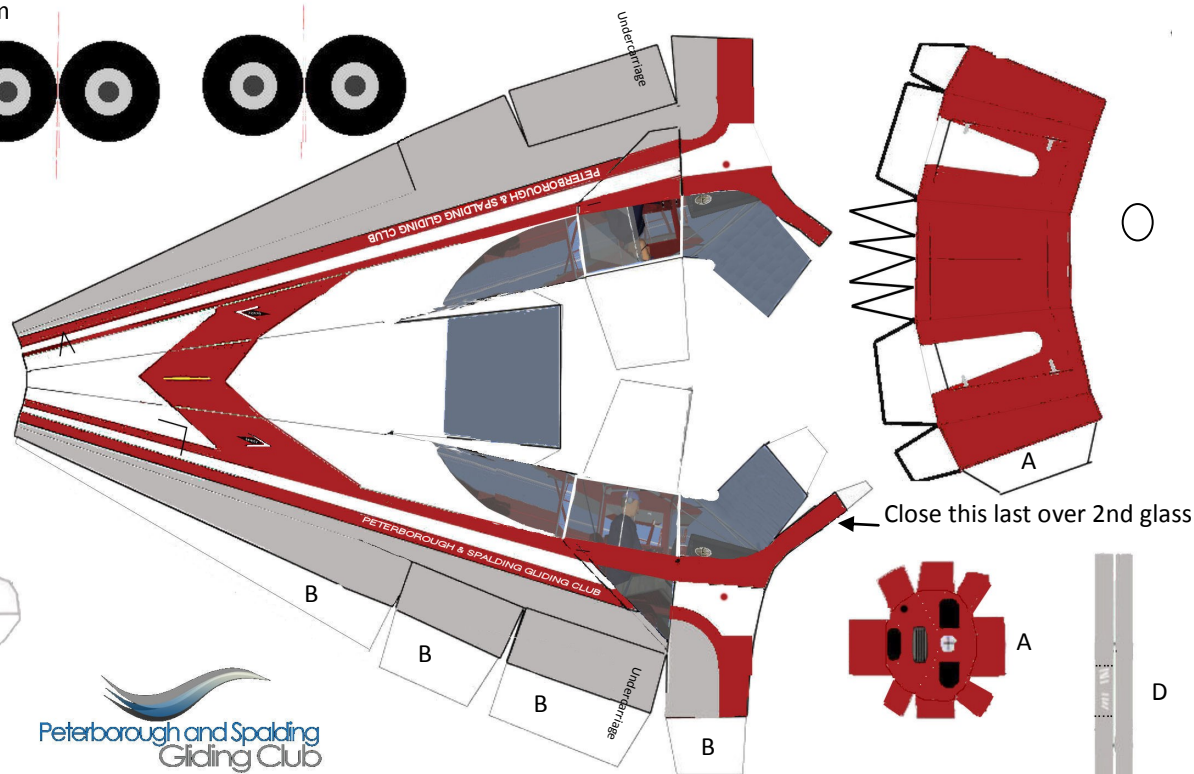
Spinner



C



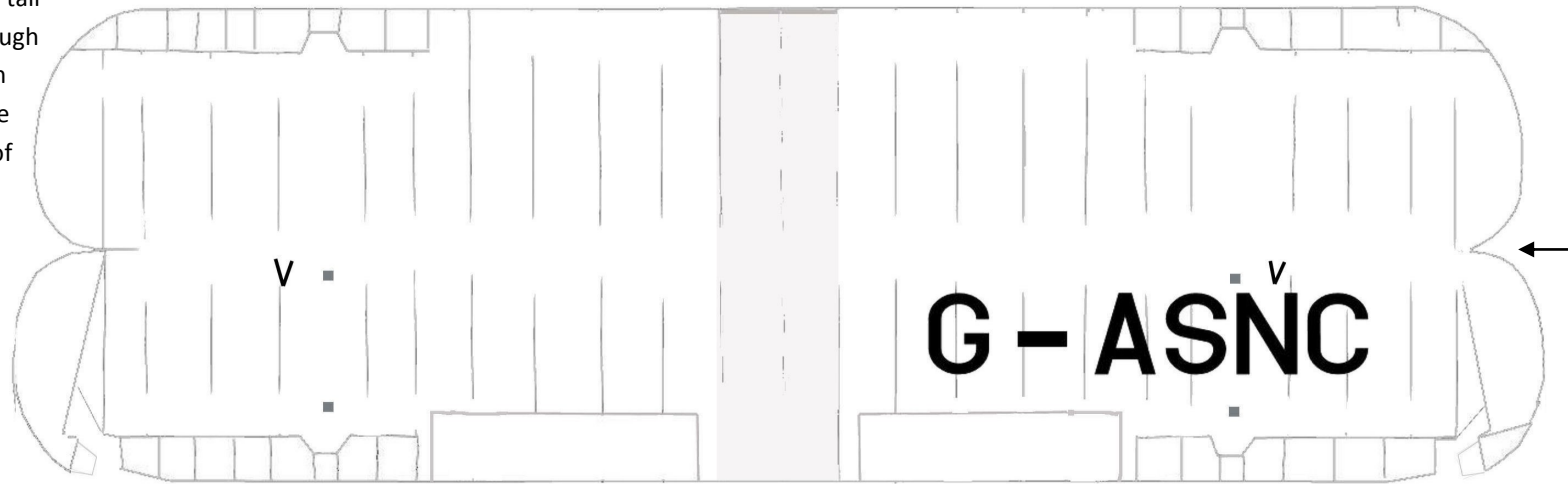
D



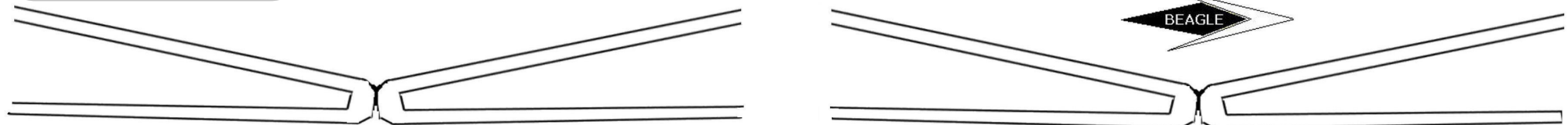
Close this last over 2nd glass



Insert cocktail stick in wing



Assemble the nose sections 'A' first, followed by the fuselage flaps 'B'. Close the top section after the tail assemble is complete. Tail fin flaps '1' pass through the slot in the top of the fuselage and then push apart gluing the number side to the inside of the fuselage, not to each other. Then close the top of the fuselage



Fold struts around another piece of paper to give strength, store flat and trim when dry